

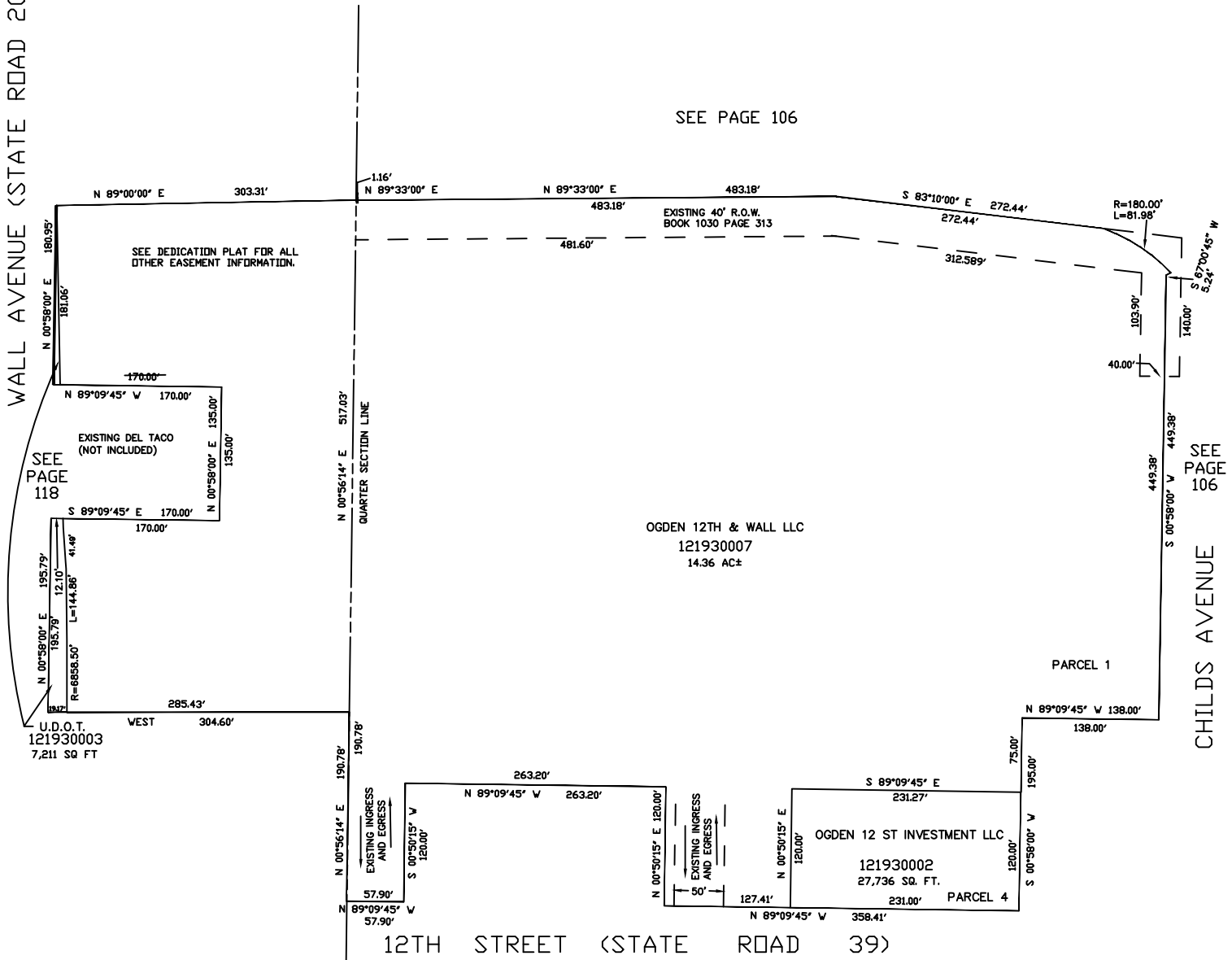
PART OF THE N 1/2, OF SEC. 20, T.6N., R.1W., S.L.B. & M.
OGDEN FRED MEYER SUB AMENDED PARCEL 1

TAXING UNIT: 25

IN OGDEN CITY
 SCALE 1" = 80'

WALL AVENUE (STATE ROAD 204)

SEE PAGE 106



OGDEN 12TH & WALL LLC
 121930007
 14.36 AC±

OGDEN 12 ST INVESTMENT LLC
 121930002
 27,736 SQ. FT.
 231.00' PARCEL 4

SEE PAGE 114

FOR COMPLETE ENG DATA SEE
 ORIGINAL DEDICATION PLAT IN
 BOOK 57 PAGE 13 OF RECORDS.