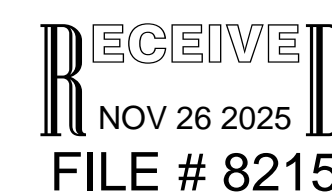
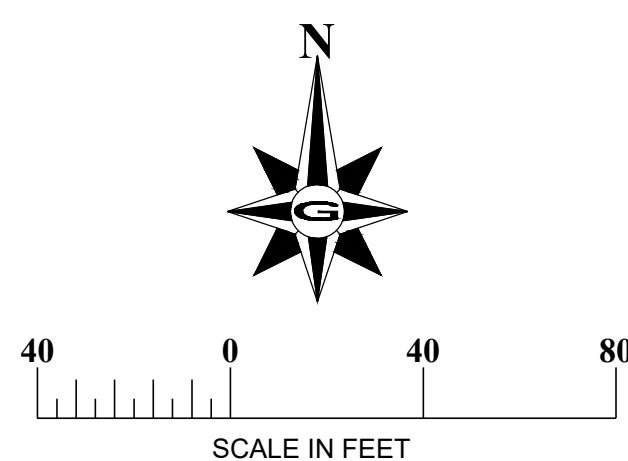
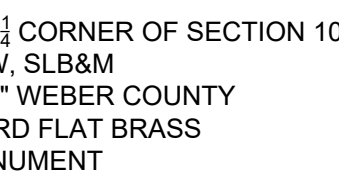


WEBER COUNTY, UTAH

1. MIDLAND SQUARE COMMERCIAL PLAT "Y" (THIRD) AMENDMENT, RECORDED SEPTEMBER 9, 2019, AS ENTRY NO 3001962 IN BOOK 86 PAGE 25 AT THE OFFICE OF THE RECORDER OF WEBER COUNTY, UTAH.
2. MIDLAND FARMS SUBDIVISION PHASE 7, RECORDED DECEMBER 9, 2019, AS ENTRY NO 3021320 IN BOOK 86 AT PAGE 81 AT THE OFFICE OF THE RECORDER OF WEBER COUNTY, UTAH.
3. MIDLAND SQUARE COMMERCIAL PLAT "A" SECOND AMENDED, RECORDED AUGUST 10, 2011, AS ENTRY NO 2537050 IN BOOK 86 PAGE 28 AT THE OFFICE OF THE RECORDER OF WEBER COUNTY, UTAH.
4. MIDLAND SQUARE COMMERCIAL PLAT "Y" (FOURTH) AMENDMENT, RECORDED SEPTEMBER 11, 2019, AS ENTRY NO 3002490 IN BOOK 86 PAGE 27 AT THE OFFICE OF THE RECORDER OF WEBER COUNTY, UTAH.
5. WESTLAKE VILLAGE SUBDIVISION PHASE 9, RECORDED JUNE 2, 1997, AS ENTRY NO 1474800 IN BOOK 44 PAGE 71 AT THE OFFICE OF THE RECORDER OF WEBER COUNTY, UTAH.
6. MIDLAND SQUARE PHASE 2A, RECORDED AUGUST 19, 2020, AS ENTRY NO 3077774 IN BOOK 88 PAGE 37-38 AT THE OFFICE OF THE RECORDER OF WEBER COUNTY, UTAH.
7. MIDLAND SQUARE COMMERCIAL PLAT "A" SECOND AMENDED, RECORDED JULY 22, 2009, AS ENTRY NO 2425488 IN BOOK 70 PAGE 22, AT THE OFFICE OF THE RECORDER OF WEBER COUNTY, UTAH.
8. WEBER COUNTY SURVEYOR FILE #3641
9. WEBER COUNTY SURVEYOR FILE #5517



DATE: APRIL 3, 2025	
PROJECT FILE: 100.002.25	
FIELD: DM/BC	DRAFTED: JB/KM
CHECKED: JR	APPROVED: JFM