

North Quarter Corner
Section 19, T5N, R1W, SLB&M
(Calc'd WCS)
N 89°40'54" E 98.27' (Meas.)

Reference Monument #4
(Found 3" Brass Cap on Iron Pipe)

Northeast Corner
Section 19, T5N, R1W, SLB&M
(Found 2.5" Brass Cap,
U.S. General Land Office Survey)
N 89°38'25" W 2611.05' (Calc'd)
(N 89°38'30" W 2610.95' WCS)

Center Corner
Section 19, T5N, R1W, SLB&M
(Found 2.5" Brass Cap,
U.S. General Land Office Survey)
N 41°59'35" E (Meas. WCS) (Base of Bearings)
N 0°07'23" E (Calc'd) (N 0°07'30" E WCS)

REV	DATE	DESCRIPTION



GREAT BASIN ENGINEERING

5746 SOUTH 1475 EAST, SUITE 202, P.O. BOX 84403
SALT LAKE CITY, UTAH 84143
WWW.GREATBASINENGINEERING.COM

ALTA/NSPS Land Title Survey

Riverdale City Flynn Property

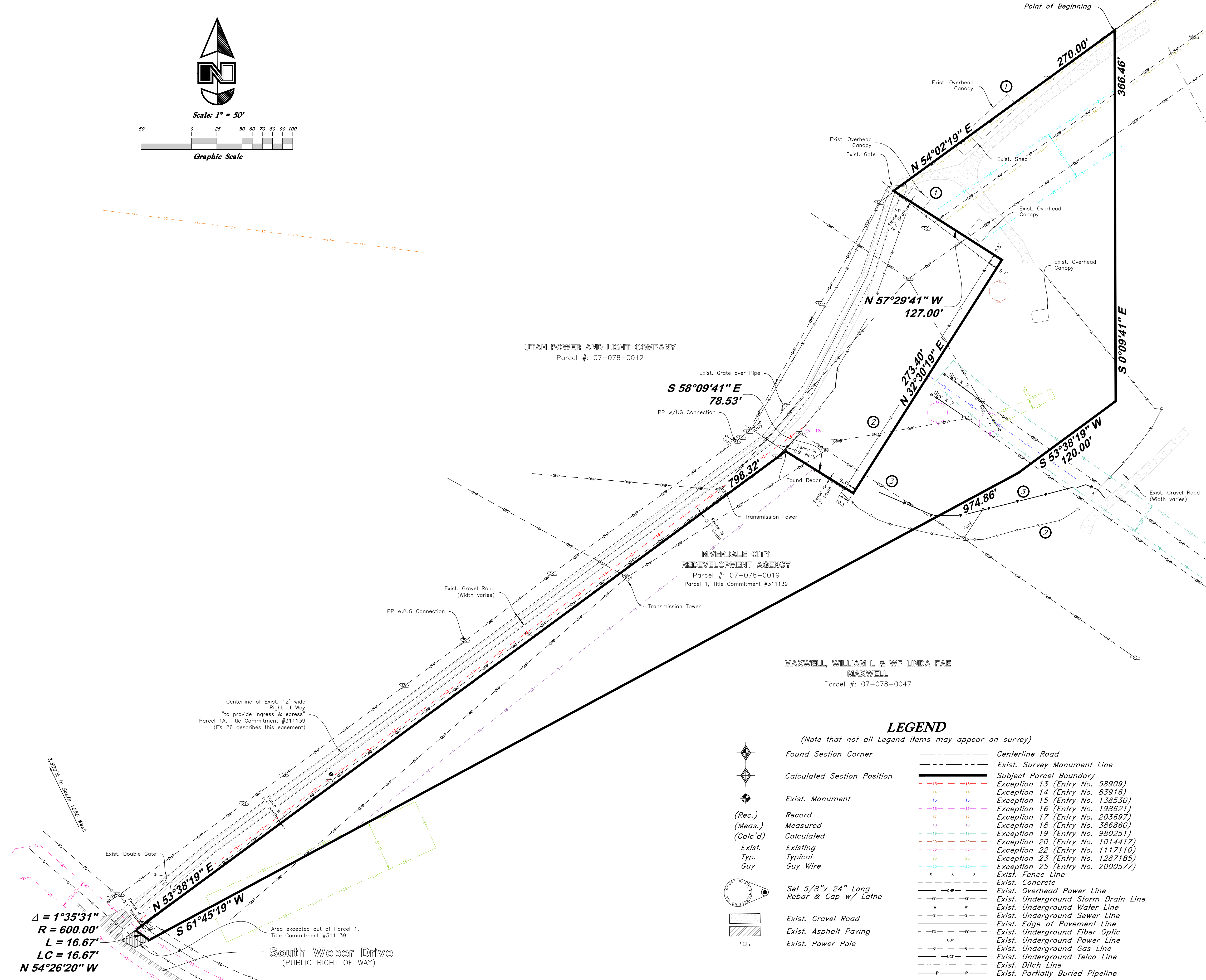
5800 South Weber Drive
Riverdale City, Weber County, Utah
A part of the NW 1/4 of Section 19, T5N, R1W, SLB&M, U.S. Survey

April, 2025

SHEET NO.

ALTA2

25-708-V



LEGEND
(Note that not all Legend items may appear on survey)

Found Section Corner	Centerline Road
Calculated Section Position	Exist. Survey Monument Line
Exist. Monument	Subject Parcel Boundary
(Rec.) Record	Exception 13 (Entry No. 58909)
(Meas.) Measured	Exception 14 (Entry No. 83916)
(Calc'd) Calculated	Exception 15 (Entry No. 138530)
Exist. Existing	Exception 16 (Entry No. 198621)
Typ. Typical	Exception 17 (Entry No. 203697)
Guy Guy Wire	Exception 18 (Entry No. 386860)
Set 5/8"x 24" Long Rebar & Cap w/ Lathe	Exception 19 (Entry No. 980251)
Exist. Gravel Road	Exception 20 (Entry No. 1014417)
Exist. Asphalt Paving	Exception 22 (Entry No. 1117110)
Exist. Power Pole	Exception 23 (Entry No. 1287185)
	Exception 25 (Entry No. 2000577)
	Exist. Fence Line
	Exist. Concrete
	Exist. Overhead Power Line
	Exist. Underground Storm Drain Line
	Exist. Underground Water Line
	Exist. Underground Sewer Line
	Exist. Edge of Pavement Line
	Exist. Underground Fiber Optic
	Exist. Underground Power Line
	Exist. Underground Gas Line
	Exist. Underground Telco Line
	Exist. Ditch Line
	Exist. Partially Buried Pipeline

RECEIVED
JUL 01 2025
FILE # 8099