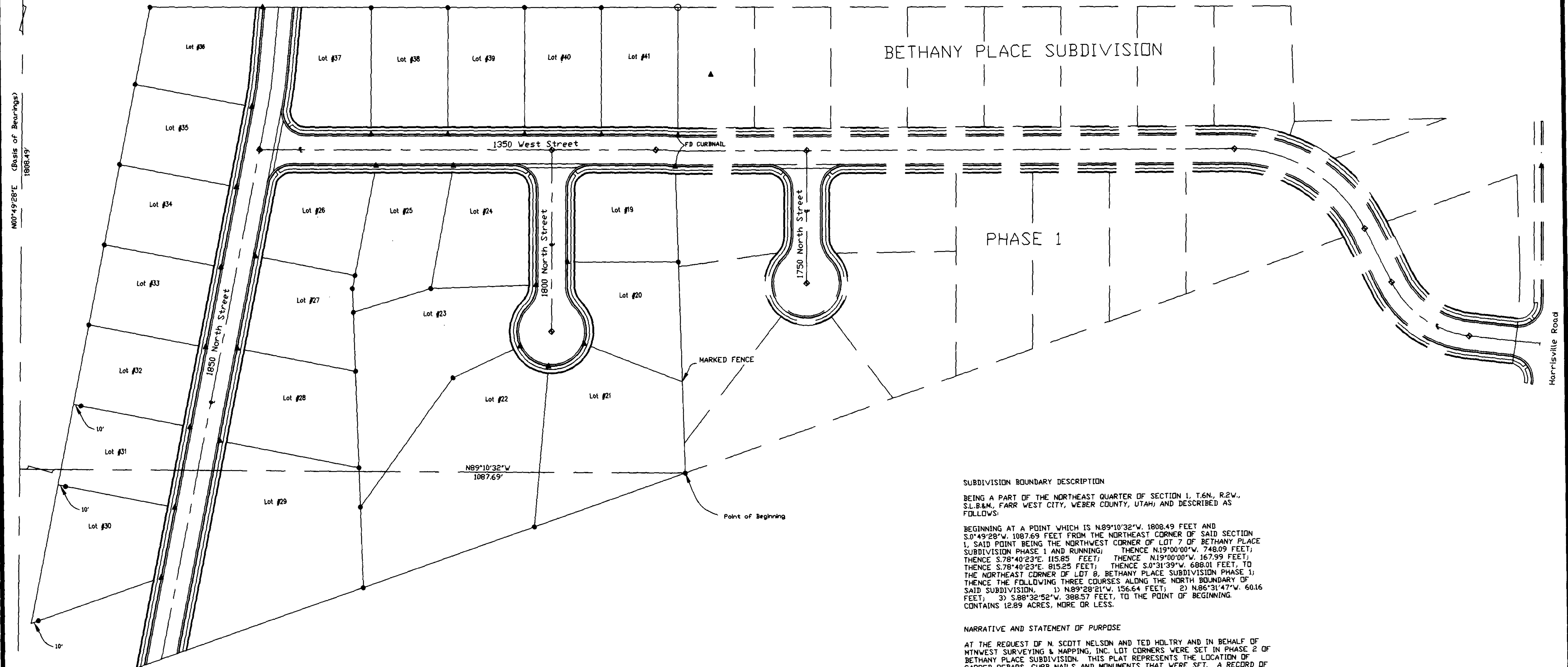


Scale: 1"=60'

Northeast Corner of Section 1  
T.6N., R.2W., S.L.B.&M.  
Weber County Monument

N00°49'28"E (Basis of Bearings)  
1808.49'



## SUBDIVISION BOUNDARY DESCRIPTION

BEING A PART OF THE NORTHEAST QUARTER OF SECTION 1, T.6N., R.2W., S.L.B.&M., FARR WEST CITY, WEBER COUNTY, UTAH; AND DESCRIBED AS FOLLOWS:

BEGINNING AT A POINT WHICH IS N.89°10'32"W. 1808.49 FEET AND S.0°49'28"W. 1087.69 FEET FROM THE NORTHEAST CORNER OF SAID SECTION 1, SAID POINT BEING THE NORTHWEST CORNER OF LOT 7 OF BETHANY PLACE SUBDIVISION PHASE 1 AND RUNNING: THENCE N.19°00'00"W. 748.09 FEET; THENCE S.78°40'23"E. 115.85 FEET; THENCE N.19°00'00"W. 167.99 FEET; THENCE S.78°40'23"E. 815.25 FEET; THENCE S.0°31'39"W. 688.01 FEET; TO THE NORTHEAST CORNER OF LOT 8, BETHANY PLACE SUBDIVISION PHASE 1; THENCE THE FOLLOWING THREE COURSES ALONG THE NORTH BOUNDARY OF SAID SUBDIVISION: 1) N.89°28'21"W. 156.64 FEET; 2) N.86°31'47"W. 60.16 FEET; 3) S.88°32'52"W. 388.57 FEET, TO THE POINT OF BEGINNING. CONTAINS 12.89 ACRES, MORE OR LESS.

## NARRATIVE AND STATEMENT OF PURPOSE

AT THE REQUEST OF N. SCOTT NELSON AND TED HOLTRY AND IN BEHALF OF MTNWEST SURVEYING & MAPPING, INC. LOT CORNERS WERE SET IN PHASE 2 OF BETHANY PLACE SUBDIVISION. THIS PLAT REPRESENTS THE LOCATION OF CAPPED REBARS, CURB NAILS AND MONUMENTS THAT WERE SET. A RECORD OF SURVEY OF THE PROPERTY THE COMPRISES PHASES 1 AND 2 OF SAID SUBDIVISION, COMPLETED BY THIS OFFICE, IS ON FILE AT THE COUNTY SURVEYOR'S OFFICE. ALSO, THE PLATS OF BETHANY PLACE SUBDIVISION PHASES 1 AND 2, ARE ON FILE AT THE COUNTY RECORDER'S OFFICE. THE BASIS OF BEARING IS THAT OF WEBER COUNTY, AS DEFINED BY THE MONUMENTS SHOWN UPON THIS DRAWING.

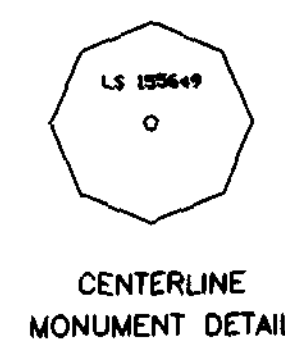
RECEIVED

FEB 20 2007

WEBER CO SURVEYOR

003788

Northeast Corner of Section 1  
T.6N., R.2W., S.L.B.&M.  
Weber County Monument



- LEGEND:
- DENOTES A SET #5 CAPPED REBAR 24" LONG
  - DENOTES A FOUND CAPPED REBAR
  - ▲ DENOTES A SET CURBNAIL
  - ◆ DENOTES A CENTERLINE MONUMENT
  - ◆ DENOTES A SECTION CORNER MONUMENT

SURVEYOR'S CERTIFICATE  
I, DICK N. MECHEM, DO HEREBY CERTIFY THAT I AM A PROFESSIONAL LAND SURVEYOR OF THE STATE OF UTAH, HOLDING LICENSE NUMBER 155649 AND THAT THIS MAP IS A TRUE AND COMPLETE REPRESENTATION OF A SURVEY MADE BY ME, OR UNDER MY SUPERVISION, AT THE REQUEST OF TED HOLTRY AND IN BEHALF OF MTNWEST SURVEYING & MAPPING, INC. ALL MONUMENTS SHOWN HEREON ARE OF THE CHARACTER AND OCCUPY THE POSITIONS INDICATED, AND ARE SUFFICIENT TO ENABLE THE SURVEY TO BE RETRACED.

DICK N. MECHEM, P.L.S.

DATE

# RECORD OF SURVEY of BETHANY PLACE SUBD. PHASE 2 for TED HOLTRY

Located in The Northeast One-Quarter Of Section 1,  
Township 6 North, Range 2 West, S.L.B.&M.

Date: Nov. 2006 No. 22-02-03 Drwn: dnn Ck'd: dh/jh

MtnWest  
Surveying &  
Mapping, Inc. 1825 W. 4400 S. PO Box 207  
Roy, Utah 84067  
Phone: (801) 731-5330 Fax: (801) 731-5331