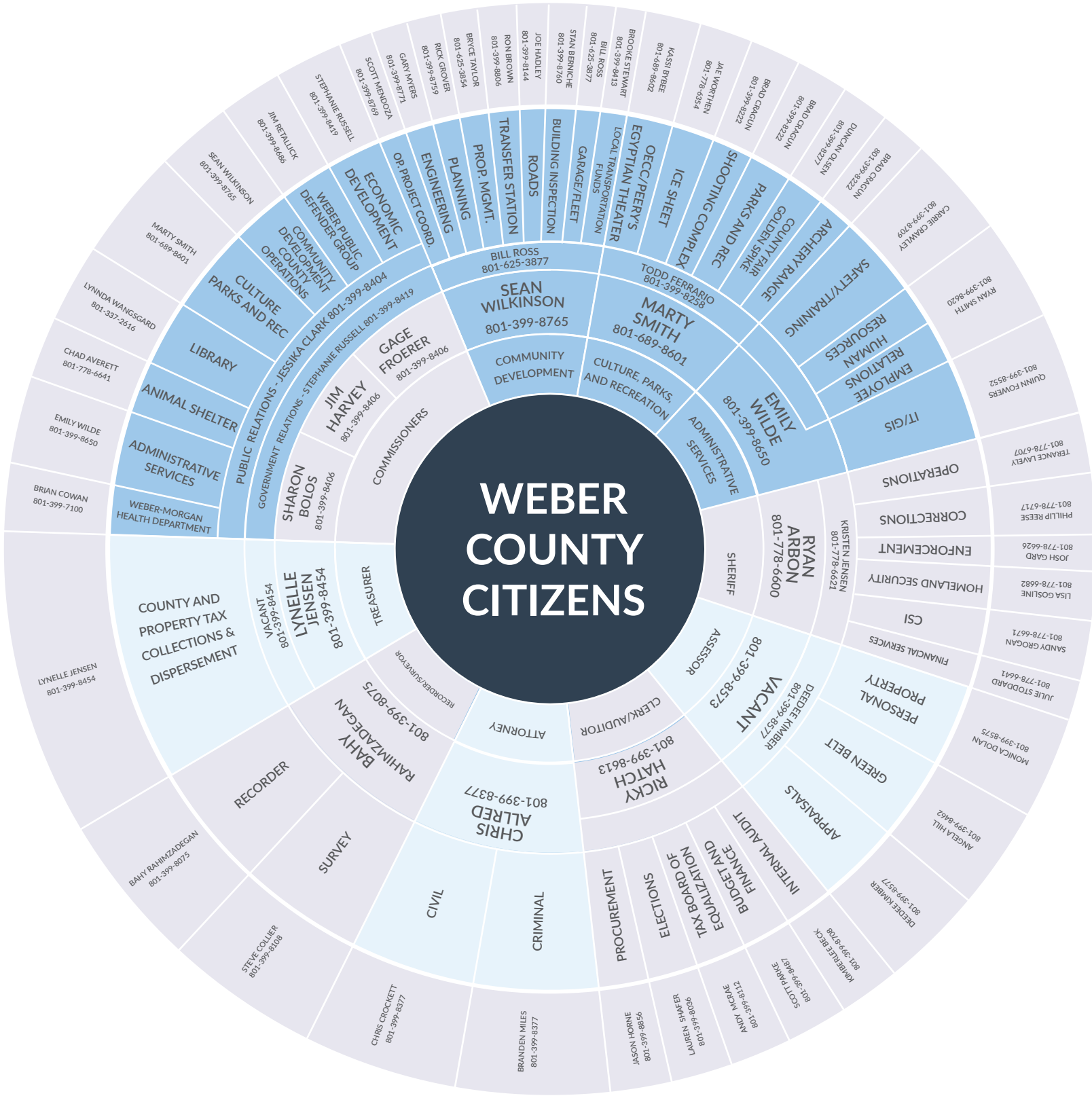


WEBER COUNTY ORGANIZATION CHART



| | | |
|--|----------------|--------------|
| WEBER-MORGAN CHILDREN'S JUSTICE CENTER | SCOTT BRENKMAN | 801-778-6261 |
| NORTHERN UTAH ECONOMIC ALLIANCE | CHRIS ROYBAL | 801-455-5690 |
| USU EXTENSION | NAOMI BROWER | 801-399-8200 |
| VISIT OGDEN | SARA TOLIVER | 801-778-6250 |
| WEBER COUNTY RAMP | SHELLY HALACY | 801-399-8405 |
| WEBER HOUSING AUTHORITY | ANDI BEADLES | 801-399-8691 |
| WEBER HUMAN SERVICES | KEVIN EASTMAN | 801-625-3700 |
| WEBER AREA DISPATCH 911 | KEVIN ROSE | 801-395-8222 |

#WinninginWeber